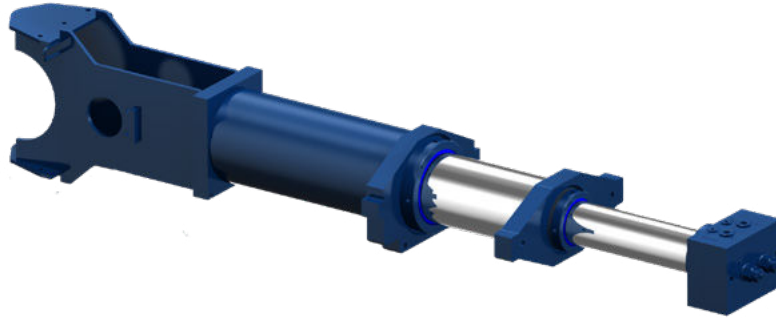


TELESCOPIC HYDRAULIC CYLINDERS



The Texas Hydraulics Telescopic Cylinder is designed for applications that require a long stroke and a short length. An internally threaded head makes it easier to remove head and rod seal without using special tools or retaining rings. The redundant rod sealing improves sealing and pressure capabilities as well as providing a buffer for pressure spikes.



■ APPLICATION EXAMPLES

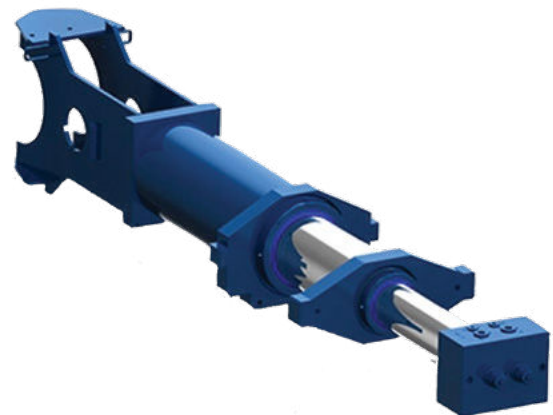
- Utilities
- Material Handling
- Public Services
- Oil & Gas
- Agriculture
- Defense
- Transportation

■ PRODUCT DESCRIPTION

- Operating pressures up to 5000 psi
- Heavy chrome-increased corrosion resistance and durability
- Tight tolerance bearings for improved alignment and reliability
- Tapered head design for tighter radial clearances
- Bores range from 3.50" To 22.00"
- Up to five stages available
- 400"+ Stroke per stage, dependent on bore sizes
- Rod fed double and single acting available
- High pressure sealing

■ OPTIONAL FEATURES

- Custom mounting for flexibility
- Skip sleeve option- for a higher retract force
- Valve integration
- Independent double acting stages



Texas Hydraulics, Inc.
3410 Range Road
Temple, TX 76504
Tel: 254-778-4701
www.texas hydraulics.com

PRODUCT DATA SHEET

TEXAS
HYDRAULICS
Problem Solved.
THI-PDS-v1-102022