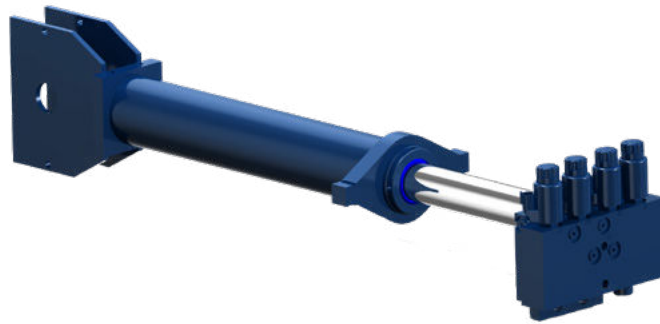


# ELECTRONIC ADVANCED SUB-SYSTEM

## Integrated (EAS-i) Actuator



**The Texas Hydraulics' EAS-i Actuator** is a self-contained system, which controls cylinder motion to perform a programmed function or to respond to an input. The EAS-i Actuator can provide closed-loop feedback on pressure, temperature, cycles, angle, velocity and/or position from the actuator to the on-board controller and can be customized to your system.



### APPLICATION EXAMPLES

- Utilities
- Material Handling
- Road Service
- Oil & Gas
- Agriculture
- Defense
- Transportation

### PRODUCT FEATURES

- On-board electronic controller
- Input system which feeds into controller with secondary input capability
- Hydraulic cylinder designed to match application requirements
- Easily programmable logic
- Equipment function synchronization and sequencing
- Work envelope control
- Speed/acceleration control (Electronic cushion/velocity control)
- Position, velocity, temperature, cycles and pressure feedback devices
- Parallel/series system capability (Lift/steer – rotate/tilt – etc.)
- Hydraulic integrated circuit (HIC) valve manifold utilizing load holding, flow, pressure, proportional and directional control cartridge valves
- Links to the various data transfer lines in the main control system (J1939 and CAN-bus)

### PRODUCT ADVANTAGES

- Simplified electro-hydraulic systems
- Fully tested, plug-and-play solution
- control solution designed around application and desired function
- Highly flexible and modular
- Easy troubleshooting and repair
- Increased stiffness and control due to valve proximity
- Provides simple, local feedback
- Decreased number of leak points
- Lower heat generation and improved efficiency through optimized pressure drops
- Decreased part numbers and less inventory control required
- Allows for improved performance and reliability in various environments



Texas Hydraulics, Inc.  
3410 Range Road  
Temple, TX 76504  
Tel: 254-778-4701  
[www.texas hydraulics.com](http://www.texas hydraulics.com)

**PRODUCT DATA SHEET**

**TEXAS**  
**HYDRAULICS**  
Problem Solved.

THI-PDS-v1-102022