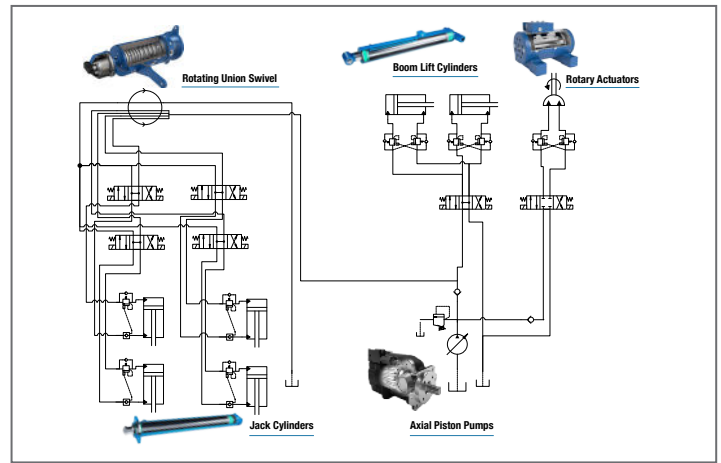




*Problem Solved.*

**HYDRAULIC SYSTEMS  
ENGINEERED FOR  
RELIABILITY AND EFFICIENCY**



**Texas Hydraulics, Inc.** specializes in custom-engineered hydraulic components and solutions for Original Equipment Manufacturers (OEMs). With over five decades of experience, a 225,000-square-foot manufacturing facility in Texas, and an expert engineering team, Texas Hydraulics is committed to superior design, customer service, and technological leadership.

## Engineered Hydraulic Solutions

<b>Application Engineering</b>	<b>Custom hydraulic solutions</b> crafted for unique application needs.
	Collaborative approach utilizing technical account managers and on-site application engineers ensures optimal design and performance.
<b>Hydraulic Integration</b>	Expert integration of components into high-performance <b>systems</b> .
	Seamless connection from concept through field service and aftermarket support.
<b>System Validation   On-site</b>	<b>Rigorous testing</b> processes for reliability, safety, and robust performance in the field.
	Lean manufacturing methods ensure both quality and efficiency in delivery.
<b>Modular Design   Kitting</b>	<b>Pre-assembled, plug and play hydraulic packages</b> reduce installation time and simplify projects.
	Lean manufacturing methods ensure both quality and efficiency in delivery.



# REMANUFACTURED HYDRAULIC COMPONENTS

Our **REMAN** program gives new life to Hydraulic Cylinders and Swivels (Rotary Unions).

Every remanufactured component undergoes rigorous inspection, replacement of wear components, and precision testing. The result: reduced downtime, lower total cost of ownership, and a more sustainable choice for your operations.

## How REMAN Works:

- **Inspection & Assessment:**  
Your component is completely torn down, cleaned, and evaluated to identify wear and opportunities for improvement.
- **Replacement & Rebuild:**  
Worn seals, bearings, and internal parts are replaced with new precision components, restoring performance to current specifications.
- **Testing & Certification:**  
Each REMAN unit goes through pressure and flow testing to verify like-new operation and reliability.
- **Field-Ready Delivery:**  
Units ship ready to install—with full documentation, testing results, and warranty coverage.

## Why Remanufactured Makes Business Sense:

- **Reduce Downtime:**  
Build your maintenance schedule around predictable deliveries and ready-to-install components.
- **Lower Costs:**  
Save 40–60% compared to new components without compromising performance
- **Protect Performance:**  
Each unit is tested and certified to meet or exceed OEM standards.
- **Choose Sustainability:**  
Extend component life, reduce waste, and support your company's ESG goals.

## Connect with Engineering Experts

Connect with Texas Hydraulics engineering experts to learn about our advanced hydraulic solutions tailored to your needs.

**Email:** [inquiry@texashyd.com](mailto:inquiry@texashyd.com) | **Website:** [www.texashydraulics.com](http://www.texashydraulics.com)

