

 **HYDROMOTION**

Fluid & Electric Swivels

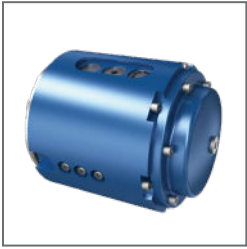


**ENGINEERED SOLUTIONS
FOR ROTATING ASSEMBLIES**



CONNECT • ROTATE • ELEVATE

RELIABILITY. EVERY JOB. EVERY DAY.



Power Plate
XD Electric Swivel

ABOUT HYDROMOTION

With over 40 years in rotary unions, electrical slip rings, and position sensing technology, Hydromotion supplies engineered solutions for material handling, aerial lifts, construction equipment, mobile hydraulic systems, and industrial machinery. Our ISO 9001-certified manufacturing, patented designs, and focus on reliability under heavy-duty cycles support OEMs, machine builders, and fleet operators in mobile equipment, forestry, utility, mining, and aerospace sectors.



Power Plate
Electric Swivel

DESIGNED FOR EXCELLENCE

Hydromotion designs and manufactures electric slip plates, fluid swivels, position sensing systems, and combination swivels. Patented designs, experienced engineering, and controlled manufacturing processes support consistent performance and product quality.



MARS Electric/
Fluide Swivel

TECHNICAL CAPABILITIES & STANDARDS

- **ISO 9001 certified quality systems** with and defined manufacturing processes.
- **AWS D1.1 certified welders** using motion-controlled fixtures for weld penetration and deposition control.
- **Lab capability** for electrical testing, hydraulic pressure testing, and rotational testing to 150% of rated pressure.
- **Creo CAD** with 3-D modeling and finite element analysis.
- **Aftermarket** service, remanufacturing, and rebuild support.

WHY CHOOSE HYDROMOTION?

- **Custom integration:** Slip rings, rotary unions, and feedback solutions configured for OEM machine designs.
- **Proven manufacturing quality:** ISO 9001-certified systems and AWS D1.1 welding for mission-critical rotating assemblies.
- **Application Range:** Mobile hydraulics, heavy machinery, industrial automation, and material handling.
- **Technical support:** CAD models, engineering guidance, and responsive support on application and field issues.



POWER PLATE™ ELECTRIC SWIVELS (SLIP RINGS)

Industrial-Duty Power and Signal Transmission for Rotating Mechanisms

- **Continuous electrical transmission** between rotating and fixed structures.
- **Signal paths** for CAN bus, Ethernet, and HD video.
- **Up to 36 circuits**, 30A per plate, 16GA-10GA conductors, bundled to 6GA for controls and sensors.
- **Aluminum or high-impact polymer housings** matched to vibration and weight needs.
- **Ingress protection** to IP67 or IP68 for harsh environments.
- **Low-maintenance construction** supporting long service intervals in mobile and stationary applications.

Model	Circuits (max)	Current/Plate	Housing	Ingress Rating	Notable Features
Power Plate Polymer	12	30A	High-Impact Plastic	IP67	Pre-wired circuits
Power Plate XD	36	30A	Aluminum	IP68	Rugged, engineered for off-highway, utility

Fits MEWP (Mobile Elevated Work Platform), utility trucks, cranes, construction lifts, and more.

NON-CONTACT ROTARY POSITION SENSOR

- **Solid-state magnetic sensing** eliminates mechanical wear and contact brushes.
- **Rotational accuracy** suitable for motion control and load feedback.
- **Sealed design** up to IP67/IP69K for hydraulic fluid exposure and washdown.
- **Interfaces** with common industrial and mobile equipment control architectures.
- **Available as a standalone unit** or integrated into slip ring or fluid swivel assemblies.

Fluid Swivels (Rotary Unions)

Sealed Fluid Pathway for Rotating Hydraulic Actuators and Drive Systems

- **Flow capacity** to 300 gpm and pressures to 7,500 psi for hydraulic motors, rotary actuators, winches, and rotation manifolds.
- **Compact footprint** to fit boom and arm structures and support field maintenance.
- **Seal configurations** for hydraulic oils, pneumatics, coolant, and other process fluids.
- **Suited for mobile hydraulics**, construction, mining, and heavy equipment duty cycles.

Combination Swivels

Integrated Electrical and Fluid Swivel Assembly – Single Load Path, Multiple Media

- **Multi-media integration:** Electrical slip rings, hydraulic rotary unions, and rotary encoders in one integrated housing
- **Footprint optimization:** Reduces load path complexity and connector integration points for compact boom lifts, aerial work platforms, and telehandler rotation systems
- **Simplified field serviceability:** Single-component replacement strategy versus multiple discrete swivels; reduces troubleshooting complexity and spare parts inventory
- **Application coverage:** MEWP (Mobile Elevated Work Platform) rotation, utility truck articulation, crane tip controls, construction lift mechanisms, and advanced automation platforms.



HYDROMOTION

Hydromotion, Inc.

85 East Bridge Street
Spring City, PA 19475



Office: 610-948-4150

Fax: 610-948-6733

Email: inquiry@hydromotion.com

Website: www.hydromotion.com

TH Holdings affiliated brands:

