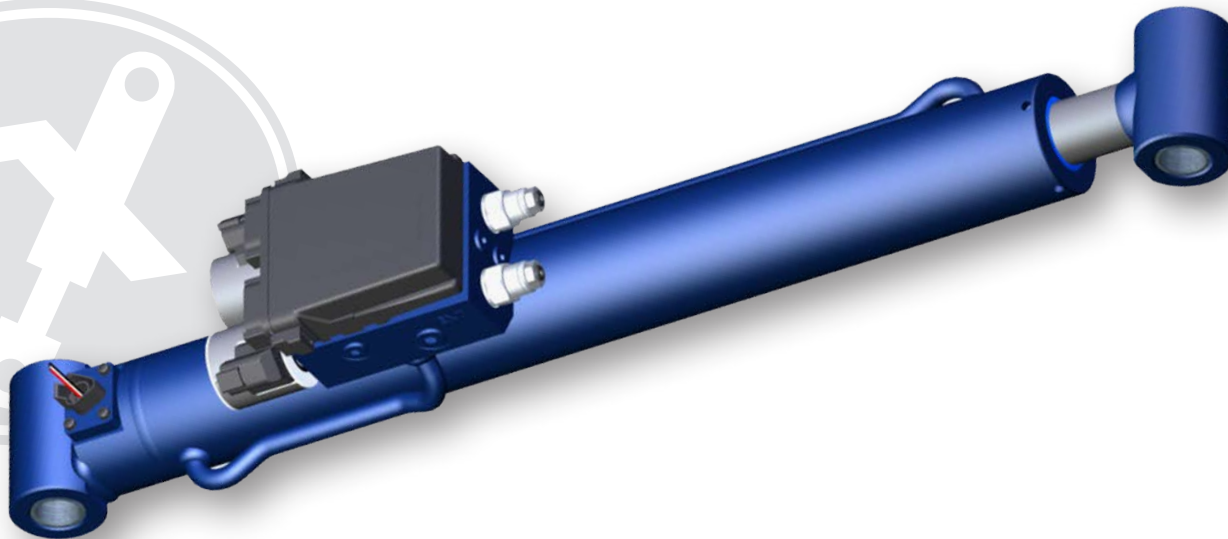


Electronic Advanced Sub-System – Integrated (EAS-i) Actuator

The Texas Hydraulics' EAS-i Actuator is a self-contained system, which controls cylinder motion to perform a programmed function or to respond to an input. The EAS-i Actuator can provide closed-loop feedback on pressure, temperature, cycles, angle, velocity and/or position from the actuator to the on-board controller and can be customized to your system.



Product Features:

- On-Board Electronic Controller
- Input System which Feeds into Controller with Secondary Input Capability
- Hydraulic Cylinder Designed to Match Application Requirements
- Easily Programmable Logic
- Equipment Function Synchronization and Sequencing
- Work Envelope Control
- Speed/Acceleration Control (Electronic Cushion/Velocity Control)
- Position, Velocity, Temperature, Cycles and Pressure Feedback Devices
- Parallel/Series System Capability (Lift/Steer – Rotate/Tilt – Etc.)
- Hydraulic Integrated Circuit (HIC) Valve Manifold Utilizing Load Holding, Flow, Pressure, Proportional and Directional Control Cartridge Valves
- Links to the Various Data Transfer Lines in the Main Control System (J1939 and CANbus)

Product Advantages

- Simplified Electro-Hydraulic Systems
- Fully Tested, Plug-and-Play Solution
- Control Solution Designed around Application and Desired Function
- Highly Flexible and Modular
- Easy Troubleshooting and Repair
- Increased Stiffness and Control due to Valve Proximity
- Provides Simple, Local Feedback
- Decreased Number of Leak Points
- Lower Heat Generation and Improved Efficiency through Optimized Pressure Drops
- Decreased Part Numbers and Less Inventory Control Required
- Allows for Improved Performance and Reliability in Various Environments