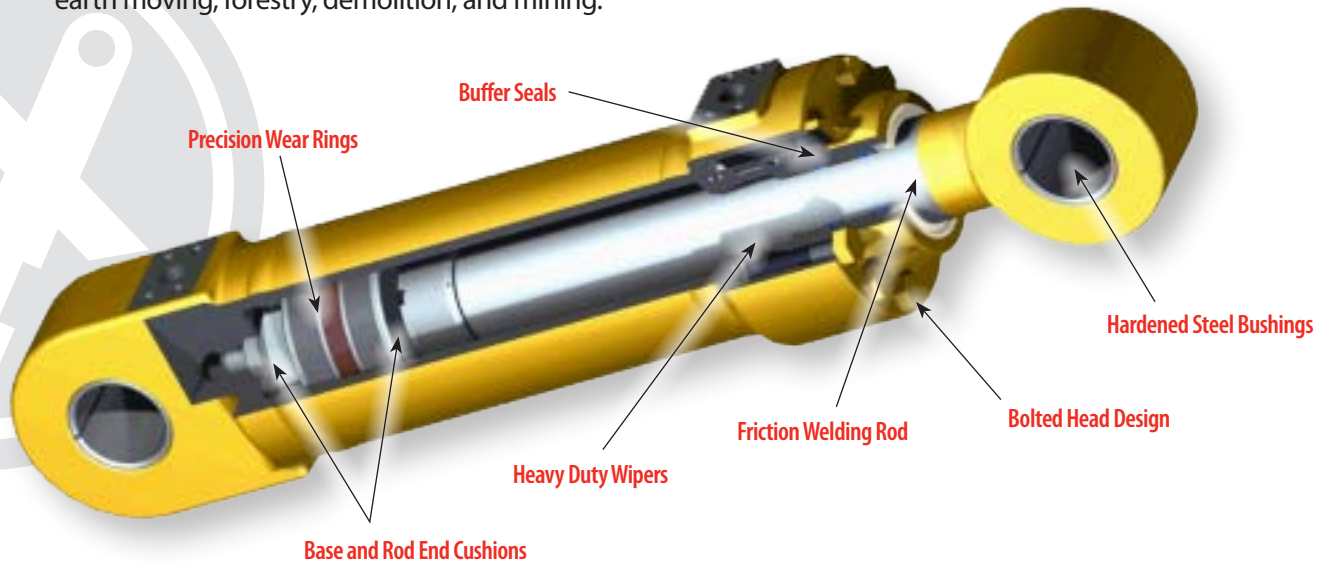


Construction Grade Hydraulic Cylinders

Our Construction Grade Cylinders are designed for extreme duty applications. They have a high cycle fatigue resistance, forged end mounts, chrome plating, and induction hardened rod. A bolted head design allows for easier serviceability, and the buffer seals help to extend rod seal life. It is ideal for applications in construction, earth moving, forestry, demolition, and mining.



Product Description

- Cylinder Designed for Extreme Duty Applications
- Bolted Head Design for Serviceability
- High Cycle Fatigue Resistance
- Friction Welded Rod Mounts Available
- Forged End Mounts
- Chrome Plated and Induction Hardened Rod
- Base and Rod End Cushions with Fast Start
- Buffer Seals to Extend Rod Seal Life
- Precision Wear Rings on Piston and Rod
- 4 Piece High Pressure Piston Sealing System
- O-Ring Boss or 4-Bolt Flange Porting
- 5000 psi (345 bar) Continuous
- 6000 psi (415 bar) Intermittent
- 120 ft/min Rod Speed (37 m/min)
- -35 to 220 Degrees Fahrenheit
(-37 to 104 Degrees Celsius) Continuous

Optional Features

- Alternate Output Types for Tighter Control:
Digital, CAN-bus
- Variable Voltage

APPLICATION EXAMPLES: Construction · Earth Moving · Forestry · Demolition · Mining



TEXAS HYDRAULICS, INC.

3410 RANGE ROAD ■ TEMPLE, TEXAS 76504
OFFICE (254) 778-4701 ■ FAX (254) 778-9940

www.texashydraulics.com

TEXAS
HYDRAULICS
Problem Solved.

Cylinder Dead Length

The charts below show the standard cylinder dead length in inches, it does not include end mounts or stroke. Add 1" to for every 10" of stroke beyond 40". For base end mounted valve block add 1.75" for up to 15 GPM, 2.00" for up to 30 GPM and 2.38" for up to 60 GPM. Any required cushion length is additive. Standard bore-rod combinations and lengths are shown, please consult Texas Hydraulics for availability of sizes not shown, or if the shorter lengths are required. These dimensions are for reference only, some applications may require more dead length than shown.

Medium-Heavy Duty Cylinders

| | 2.00 | 2.25 | 2.50 | 2.75 | 3.00 | 3.25 | 3.50 | 3.75 | 4.00 | 4.25 | 4.50 | 5.00 | 5.50 | 6.00 | 6.50 | 7.00 | 8.00 | 9.00 | 10.00 | |
|------|------|------|------|------|------|------|------|------|------|------|------|------|------|------|------|-------|-------|-------|-------|--|
| 0.75 | 4.75 | | | | | | | | | | | | | | | | | | | |
| 0.88 | 4.75 | | | | | | | | | | | | | | | | | | | |
| 1.00 | 4.88 | 4.88 | 5.00 | | | | | | | | | | | | | | | | | |
| 1.13 | 4.88 | 4.88 | 5.00 | | | | | | | | | | | | | | | | | |
| 1.25 | 5.00 | 5.13 | 5.25 | 5.75 | 6.38 | 6.50 | 6.88 | | | | | | | | | | | | | |
| 1.38 | 5.31 | 5.31 | 5.31 | 5.75 | 6.38 | 6.50 | 6.88 | 6.88 | | | | | | | | | | | | |
| 1.50 | 6.00 | 5.63 | 5.63 | 5.75 | 6.38 | 6.50 | 6.88 | 6.88 | 7.13 | | | | | | | | | | | |
| 1.63 | | 5.75 | 5.75 | 5.88 | 6.38 | 6.50 | 6.88 | 6.88 | 7.13 | 7.13 | | | | | | | | | | |
| 1.75 | | 6.00 | 6.00 | 6.19 | 6.38 | 6.50 | 7.00 | 6.88 | 7.25 | 7.25 | | | | | | | | | | |
| 2.00 | | | | 7.25 | 6.75 | 6.88 | 7.13 | 7.00 | 7.38 | 7.38 | 7.63 | 8.13 | | | | | | | | |
| 2.25 | | | | | | 6.88 | 7.13 | 7.13 | 7.38 | 7.38 | 7.63 | 8.38 | | | | | | | | |
| 2.50 | | | | | | | 7.38 | 7.13 | 7.38 | 7.38 | 7.63 | 8.50 | 8.88 | | | | | | | |
| 2.75 | | | | | | | | 7.38 | 7.38 | 7.38 | 7.88 | 8.75 | 8.88 | 9.13 | 9.13 | | | | | |
| 3.00 | | | | | | | | | 7.63 | 7.63 | 8.00 | 8.75 | 9.00 | 9.13 | 9.13 | | | | | |
| 3.25 | | | | | | | | | | | 8.25 | 8.75 | 9.00 | 9.25 | 9.25 | 9.63 | 9.88 | | | |
| 3.50 | | | | | | | | | | | 8.50 | 8.88 | 9.25 | 9.50 | 9.50 | 9.63 | 9.88 | | | |
| 3.75 | | | | | | | | | | | | 8.88 | 9.50 | 9.75 | 9.75 | 10.13 | 10.13 | | | |
| 4.00 | | | | | | | | | | | | 8.88 | 9.50 | 9.75 | 9.75 | 10.13 | 10.13 | 12.00 | 12.00 | |
| 4.50 | | | | | | | | | | | | | | | | 12.25 | 10.38 | 12.25 | 12.25 | |
| 5.00 | | | | | | | | | | | | | | | | | 10.38 | 12.50 | 12.50 | |
| 5.50 | | | | | | | | | | | | | | | | | | 12.50 | 12.50 | |
| 6.00 | | | | | | | | | | | | | | | | | | 13.00 | 13.00 | |

Light-Medium Duty Cylinders

| | 1.00 | 1.25 | 1.50 | 1.75 | 2.00 | 2.25 | 2.50 | 2.75 | 3.00 | 3.25 | 3.50 | 3.75 |
|------|------|------|------|------|------|------|------|------|------|------|------|------|
| 0.50 | 3.44 | | | | | | | | | | | |
| 0.63 | | 3.75 | 4.00 | | | | | | | | | |
| 0.75 | | 3.75 | 4.13 | 4.25 | 4.13 | | | | | | | |
| 0.88 | | | 4.13 | 4.25 | 4.25 | | | | | | | |
| 1.00 | | | | 4.38 | 4.38 | 4.38 | 4.50 | | | | | |
| 1.13 | | | | | 4.38 | 4.38 | 4.50 | | | | | |
| 1.25 | | | | | 5.00 | 4.50 | 4.75 | 4.88 | 5.13 | 5.13 | 5.25 | |
| 1.38 | | | | | 5.00 | 4.75 | 5.00 | 4.88 | 5.13 | 5.13 | 5.25 | 5.25 |
| 1.50 | | | | | | 5.00 | 5.00 | 5.00 | 5.13 | 5.13 | 5.25 | 5.25 |
| 1.63 | | | | | | 5.50 | 5.50 | 5.50 | 5.38 | 5.38 | 5.38 | 5.38 |
| 1.75 | | | | | | | | 6.00 | 5.50 | 5.50 | 5.50 | 5.50 |
| 2.00 | | | | | | | | | | 6.00 | 5.50 | 5.75 |
| 2.25 | | | | | | | | | | | 6.00 | 6.00 |
| 2.50 | | | | | | | | | | | | 6.25 |



3410 RANGE ROAD
 TEMPLE, TEXAS 76504
 OFFICE (254) 778-4701
 FAX (254) 778-9108

